

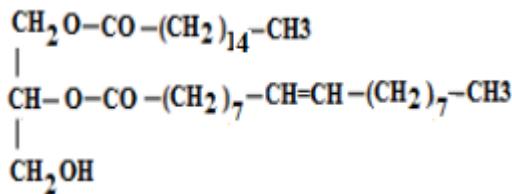
sixth directed work of biochemistry

Structure and physicochemical properties of lipids

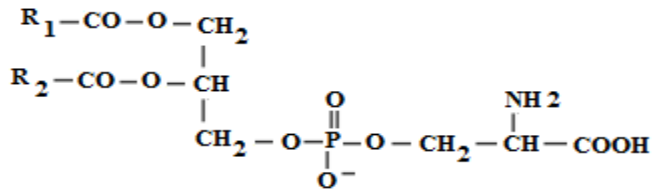
Exercise1: Which of the following statements regarding glycerophospholipids is (are) correct ?

- Phospholipids are simple lipids.
- These are energy lipids.
- They all derive from phosphatidic acid.)
- These are amphiphilic molecules.

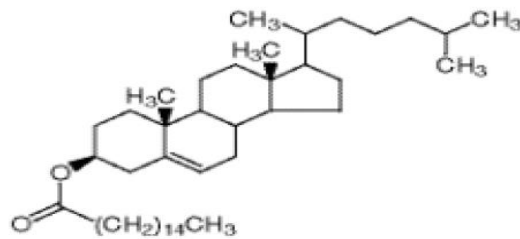
Exercise 2: Give the name of each of the following lipids, specifying the lipid class to which it belongs.



(1)



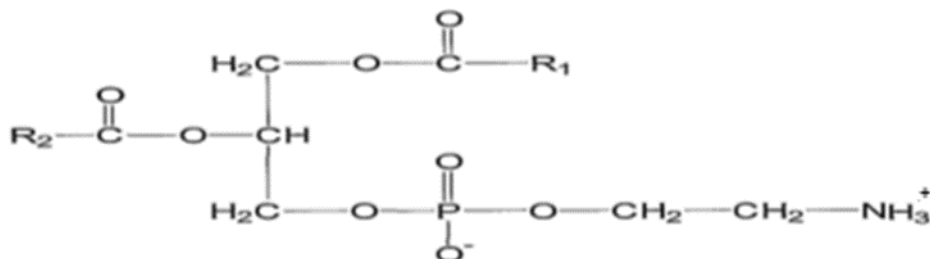
(2)



(3)

Exercise 3.

Consider the following lipid:



- What class does it belong to?
- Give the name of the alcohol to which the phosphatidyl radical is linked.

- What do we obtain after alkaline hydrolysis.

Exercise 4. Give the structure of a lipid containing in its structure:

- A fatty acid having 18 carbon atoms. (Stearic acid)
- An amino alcohol. (sphingosine)
- Galactose.